

**2022 COMPLETE
STREETS
IMPROVEMENTS**

ANNUAL REVIEW OF ROADWAY MAINTENANCE PROJECTS

- Every year, the Department of Municipal Development (DMD) conducts routine maintenance on 15-25 roadways in the City
- Per the Complete Streets Ordinance, O-19-64, DMD submits a memo to the City Council outlining the roadways to be repaved and their proposed striping configuration
- These changes are discussed to ensure the new striping is as Complete Streets friendly as is feasible
- *Only* striping and signage is considered as a part of this review – typically larger construction changes are outside the scope of this process



2022 IMPROVEMENT HIGHLIGHTS

HIGHLIGHTS

- 5.4 miles of new bike lanes
- **5.3 miles of new buffered bike lanes**
- 2.7 miles of bikes lanes expanded to meet or exceed the current minimum width of 5 feet
- **4 miles of new bike routes**
- 18.2 miles of narrowing a driving lane
- **11 miles where striped parking was added to narrow the road way**
- One mile of road diet
- **79 intersections with new daylighting**
- 48 new or refreshed high visibility crosswalks

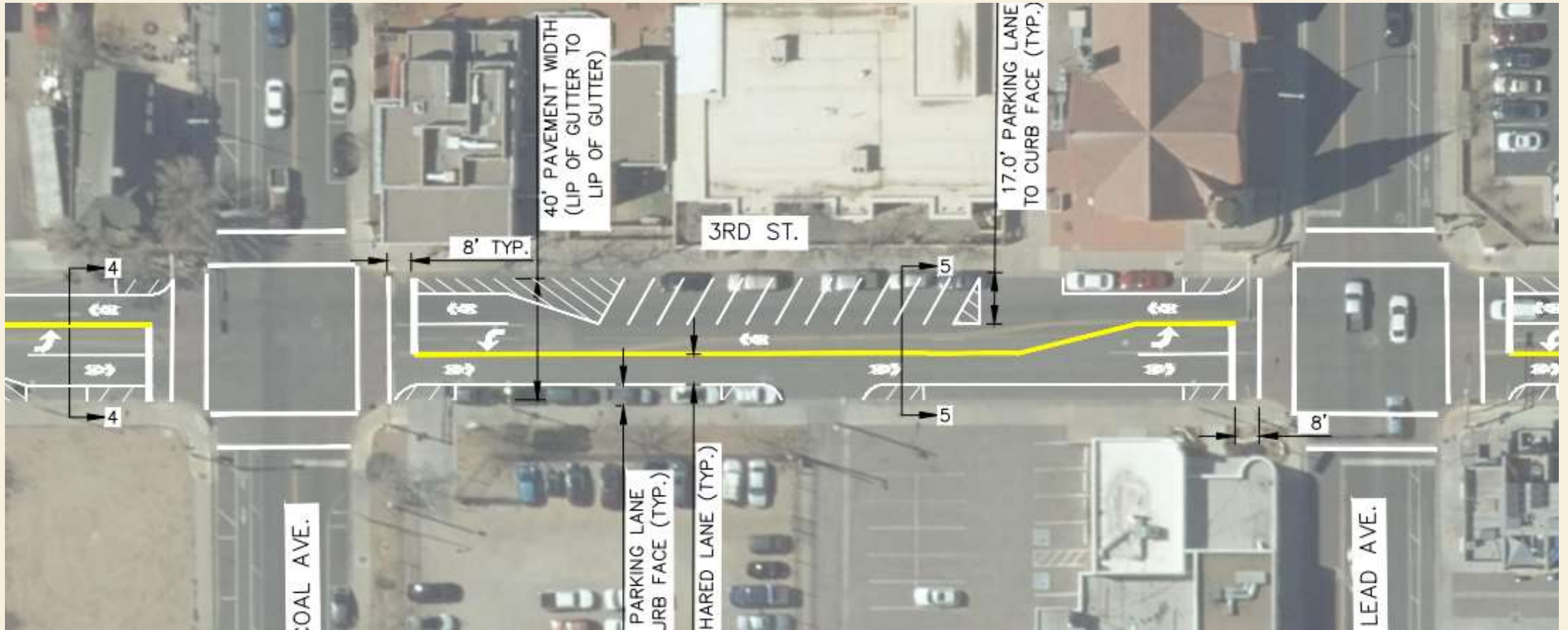
3RD STREET – AVENIDA CESAR CHAVEZ TO CENTRAL AVE

- Reduces driving lanes from 12 feet to 10 feet
- Adds a 2 foot buffer to existing on-street parking
- Adds sharrows
- Adds in back-in angled parking near the downtown core

3RD STREET – AVENIDA CESAR CHAVEZ TO CENTRAL AVE



3RD STREET – AVENIDA CESAR CHAVEZ TO CENTRAL AVE



SAN FRANCISCO RD – WYOMING BLVD TO VENTURA ST

- Reduced driving lanes from ~20 feet each to 10 feet each
- Added in a 5 foot bike lane
- Added in a striped buffer **or** an on-street parking lane, where appropriate

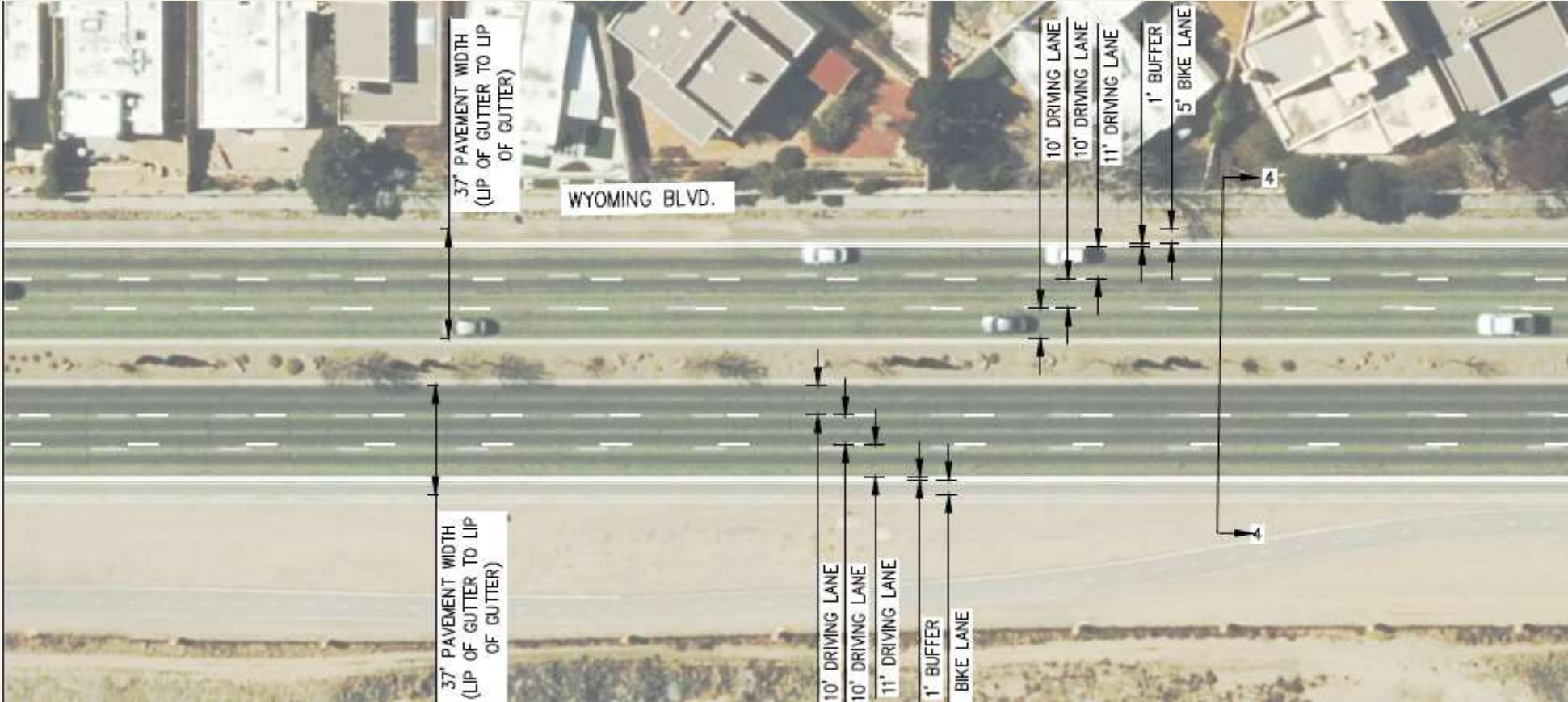
SAN FRANCISCO RD – WYOMING BLVD TO VENTURA ST



WYOMING BLVD – ACADEMY DR TO SAN ANTONIO DR

- Reduced driving lanes from 11 feet to 10 feet
- Increased bike lanes from 4 feet to 5 feet
- Introduced a 1 foot bicycle buffer

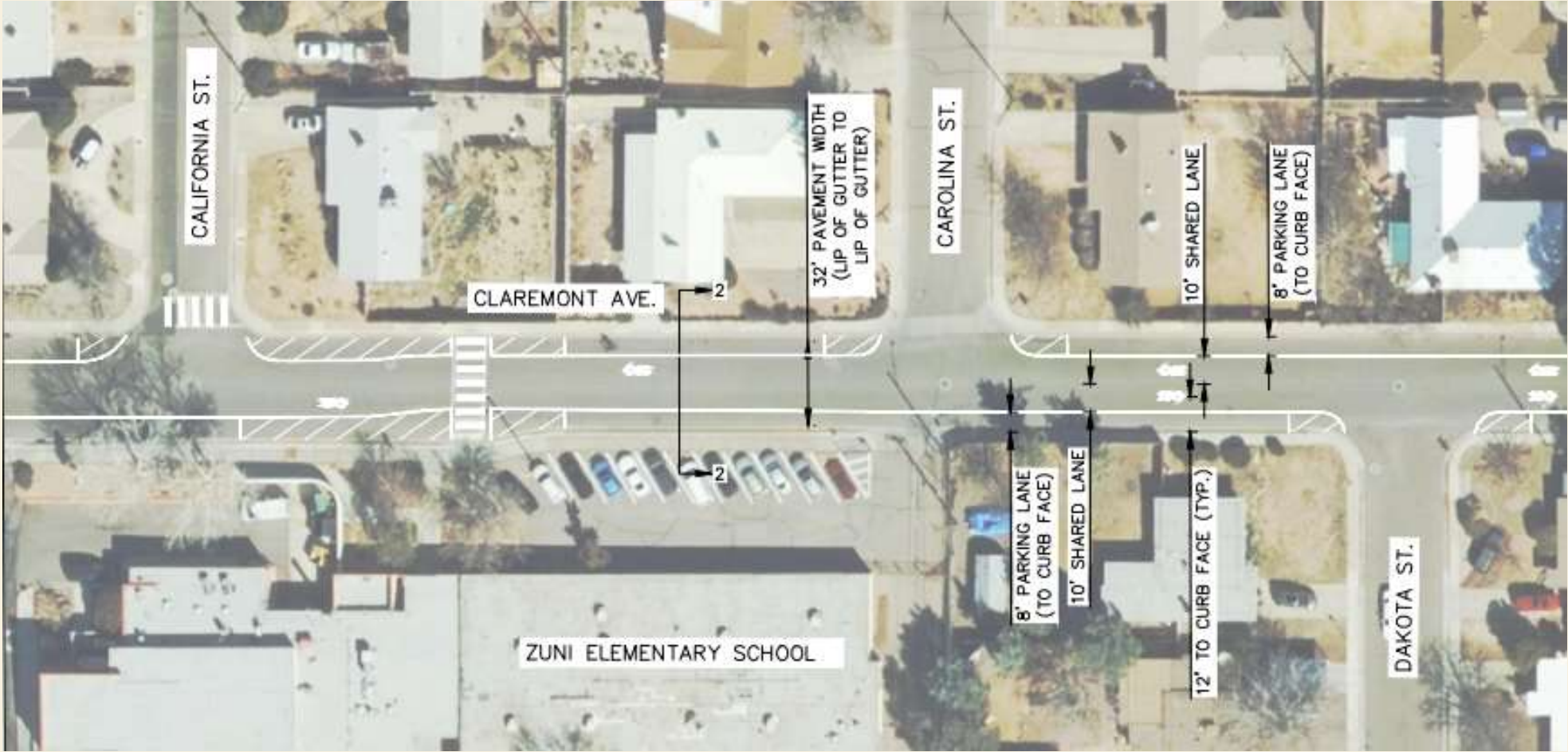
WYOMING BLVD – ACADEMY DR TO SAN ANTONIO DR



CLAREMONT AVE – SAN PEDRO DR TO LOUISIANA BLVD

- Reduces driving lanes from 18 feet to 10 feet
- Adds 10 foot on-street parking lanes to both sides of the street
- Adds sharrows
- Removes parking near intersections and crosswalks

CLAREMONT AVE – SAN PEDRO DR TO LOUISIANA BLVD



CANDELARIA RD. - JUAN TABO BLVD TO TRAMWAY BLVD

A road
diet!

- Reduced the number of driving lanes from **two** in each direction to **one** in each direction where possible
 - Driving lanes are 10-12 feet
- Adds a 6-foot bike lane in each direction with a 2-foot buffer

CANDELARIA RD. - JUAN TABO BLVD TO TRAMWAY BLVD



THANK YOU!